

## Recommended healthcare solutions

### Earth ground testers

**Best suited for:**

- Ensuring safety of personnel and proper operation of equipment
- Diagnosing intermittent electrical problems related to poor earth grounding



### Fluke Connect

**Best suited for:**

- Simplifying preventive maintenance programs
- Seamlessly integrating tool data into software
- Diagnosing asset health in the field
- Cloud-based data sharing



### Cable testers

**Best suited for:**

- Verifying and troubleshooting copper and fiber data communications infrastructure.



### Indoor air quality

**Best suited for:**

- Troubleshooting and monitoring indoor air quality
- Optimizing HVAC ventilation settings



### Portable oscilloscopes

**Best suited for:**

- Installing and maintaining electronic industrial equipment out in the field
- Diagnosing industrial machinery, automation and process controls and power electronics
- Bus health testing for industrial bus systems



### Power loggers

**Best suited for:**

- Capturing and logging over 500 power quality parameters
- Troubleshooting and performing advanced analysis on power quality issues
- Energy surveys to determine sources of electrical energy waste



### Fluke Calibration

**Best suited for:**

- Ensuring the accuracy and quality of electrical, temperature, pressure, flow measurements for health-care solutions tools.



For more information, visit [www.FlukeCal.com](http://www.FlukeCal.com)

### Infrared thermometers

**Best suited for:**

- Quickly capturing spot measurements from a distance
- Accurately measuring up to 800 °C



### Thermal imagers

**Best suited for:**

- Inspecting HVAC, refrigeration/freezer compartments, cryocoolers and MRI chiller units
- Detection of “hot spots” on motors, pumps, VFDs, bearings and compressors
- Capturing and troubleshooting tank levels
- Inspecting fuse boxes, insulators, transformers and other electrical system components
- Monitoring of roof moisture, building insulation and thermal bridging state



### Acoustic imager

**Best suited for:**

- Quickly identifying location of medical gas and compressed air, and vacuum leaks from up to 164 feet away



## Healthcare Solutions

Fluke. Keeping your world up and running.®

**Fluke Corporation**

PO Box 9090,  
Everett, WA 98206 U.S.A.

**Fluke Europe B.V.**

PO Box 1186, 5602 BD  
Eindhoven, The Netherlands

**For more information call:**

In the U.S.A. (800) 443-5853 or Fax (425) 446-5116  
In Europe/M-East/Africa +31 (0) 40 2675 200 or Fax +31 (0) 40 2675 222  
In Canada (800)-36-FLUKE or Fax (905) 890-6866  
From other countries +1 (425) 446-5500 or Fax +1 (425) 446-5116  
Web access: <http://www.fluke.com>

©2015, 2017, 2020 Fluke Corporation. Specifications subject to change without notice.  
5/2020 3039114k-en

## Fluke solutions can help you surpass safety standards with optimum efficiency

Healthcare facility professionals work with mission-critical equipment every day—failure is not an option. Maintaining constant uptime is as crucial as finding ways to save on energy costs and adhering to stringent regulatory requirements.

Fluke makes accurate, reliable, quality tools you can count on to keep your facility up and running. Depend on Fluke, the industry standard against which all other tools are measured.

### Facility Director

- Issues faced:**
- Controlling energy costs
  - Promoting an environment of care
  - Maintaining emergency preparedness
  - Ensuring regulatory compliance
  - Quality control

- Fluke solutions:**
- Power loggers
  - Power quality analyzers
  - Thermal imagers
  - Infrared thermometers
  - Acoustic imagers
  - Calibrators\*

\*Regularly calibrate the tools used to ensure they are working within their specifications

### Engineer/Electrician

- Issues faced:**
- Meeting safety standards
  - Troubleshooting sensitive equipment
  - Preventing unscheduled downtime
  - Maintain critical communications infrastructure
  - Quality control

- Fluke solutions:**
- Fluke Connect
  - Digital multimeters
  - Power quality analyzers
  - Insulation multimeters
  - Portable oscilloscopes
  - Infrared thermometers
  - Acoustic imagers
  - ⚡ Cable testers
  - Calibrators\*

\*Regularly calibrate the tools used to ensure they are working within their specifications

### Environmental Health and Safety Professional

- Issues faced:**
- Maintaining good air quality for all hospital environments
  - Educating and enforcing adherence to infection control protocols
  - Quality control

- Fluke solutions:**
- + Indoor air quality
  - Fluorescent light tester
  - Infrared thermometers
  - Calibrators\*

\*Regularly calibrate the tools used to ensure they are working within their specifications

### Maintenance/HVAC Technician

- Issues faced:**
- Controlling HVAC energy costs
  - Ensuring HVAC ventilation systems are compliant with ASHRAE 62 standards
  - Keeping wiring and equipment to spec
  - Addressing occupant comfort issues
  - Quality control

- Fluke solutions:**
- Fluke Connect
  - ▲ Process test tools
  - ▲ Pressure gauges and calibrators
  - + Indoor air quality
  - Fluorescent light tester
  - Digital multimeters
  - Earth ground testers
  - Clamp meters
  - Thermal imagers
  - ⚡ Cable testers
  - Calibrators\*

\*Regularly calibrate the tools used to ensure they are working within their specifications

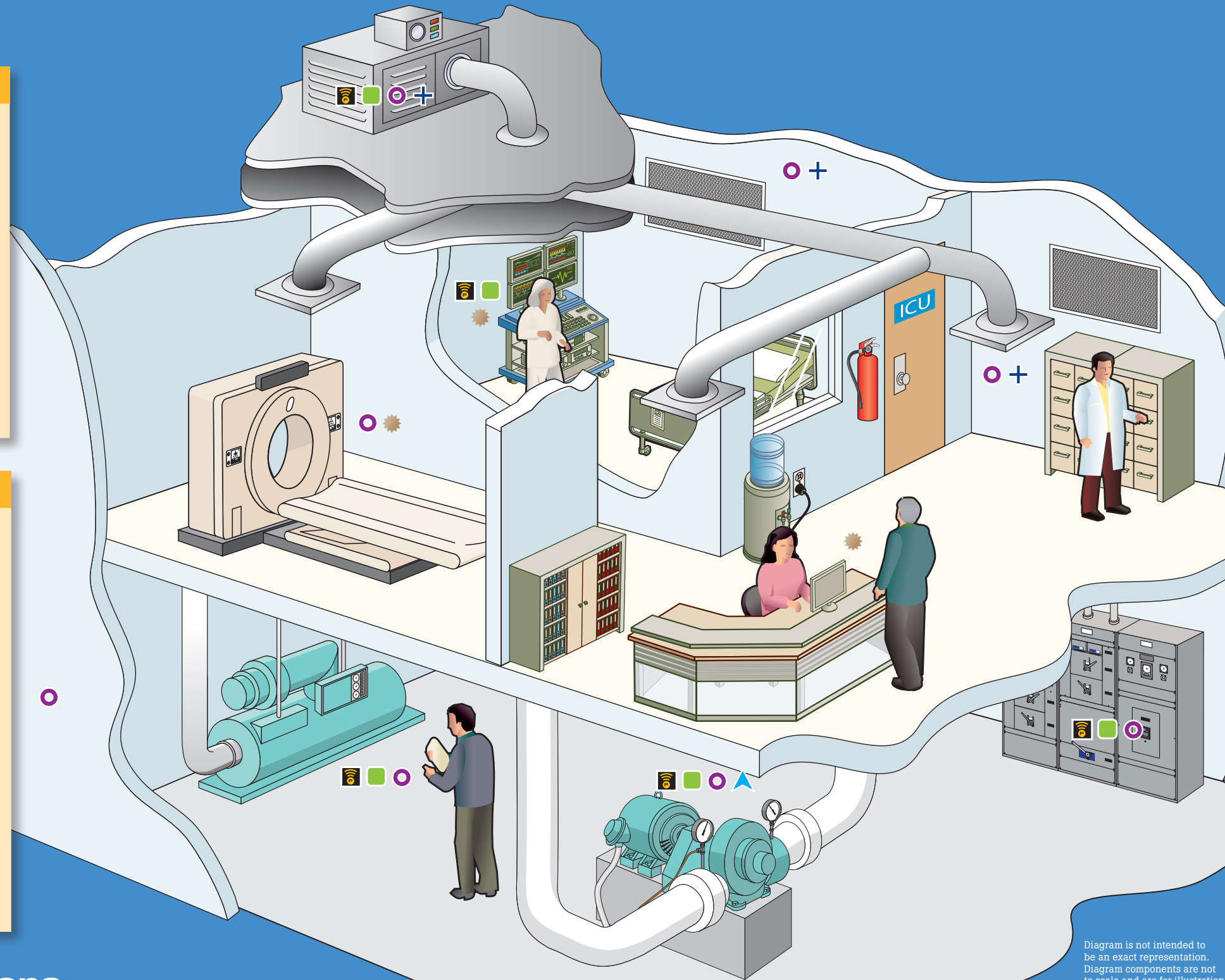


Diagram is not intended to be an exact representation. Diagram components are not to scale and are for illustration purposes only.

## Healthcare solutions

Network Tools			Process Calibration Tools		Electrical Test Tools							Infrared and Vibration Tools				Air Quality						
Cable Testers			Pressure gauges and calibrators		Process test tools		Battery Analyzer	Power quality analyzers	Motor drive analyzer	Earth ground testers	Clamp meters	Insulation multimeters	Digital multimeters	Electrical tester	Acoustic imager	Thermal imagers professional	Infrared thermometers	Vibration testers	Indoor air quality			
Micro Scanner PoE	DSX-8000 CableAnalyzer	OptiFiber Pro OTDR	700G	729	789	773	BT521 ANG	1738	MDA-550	1625-2 Kit	376 FC	902 FC	1587 FC	289	T6-1000	ii900	Ti401 Pro	568	810	805 FC	985	922